

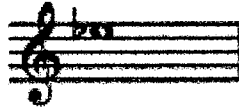
## Description of Test Questions Novice Level

### Pitch Identification:

Students should be able to read pitches using up to one leger line in either clef and should be able to locate middle "c" on both clefs.

#### Sample Question

Name the note: a) E flat b) F sharp c) G flat d) E sharp



### Understanding Terms and Symbols:

Some terms are used as vocabulary for test questions, so students should be familiar with their usage. Also, the test will include a matching section of terms and symbols with a definition. The following list of terms should be used as a guide for preparation:

treble and bass clefs

leger lines

key signature

time signature (meaning)

measure

pitch and note

accidentals (appearance and function)

tonic

crescendo

tempo

tempo markings: allegro, andante, adagio, moderato etc.

beat, meter, rhythm

note values (whole note, half note, 8<sup>th</sup> note etc.)

intervals

whole-step and half-step

rests

dynamics: forte (f), mezzo-piano (mp), pianissimo (pp) etc.

slur

### Whole-steps and Half-steps

Students should be able to distinguish whole and half steps.

### Major Scales

Students should know major scales up to three flats and three sharps.

#### Sample Question

Which note needs a flat sign to make this a F Major scale?

a) C b) B c) F d) E



Description of Test Questions  
NOVICE LEVEL continued

**Key Signatures**

Students should know major key signatures up to three flats and three sharps. Test questions will provide a key signature and ask the students to name the key.

**Meter and Rhythm**

Students should understand the meaning of both numbers in a meter (or time signature). Rhythms will include dotted notes and will range from the whole-note to the 8<sup>th</sup>-note.

**Understanding a Musical Example**

A very short musical example will be provided for which the student must identify the key of the piece, in which hand the melody occurs, and whether phrases are similar or different.