

## Description of Test Questions Level Five

### Clefs and Pitch Names

Students should be able to identify pitches in both the alto and the tenor clefs (C-clefs).

#### Sample Question

Match the pitches on the left with the identical pitches on the right.



### Intervals and Scales

Students should be prepared to demonstrate the following skills: name any interval and its inversion or enharmonic equivalent, name the interval formed between two scale degrees of any scale or mode, alter any major/minor scale to a parallel mode, and identify a mode from a given melody (final pitch is tonic).

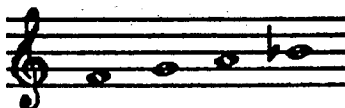
#### Sample Questions

Name the **mode** of the following melody. The last pitch is **tonic**.



- a) dorian      b) lydian      c) mixolydian

Select the appropriate scales from the given **tetrachord**.



- a) F Maj. and C Maj.      b) B $\flat$  Maj. and F Maj.      c) B $\flat$  Maj. and C Maj.

### Keys and Chords

The following information is tested: all triads and 7th chords in any position, ninth chords in root position, function and spelling of dominant 7th chords and secondary dominant 7th chords. recognition of authentic, plagal, half, and deceptive cadences, fluency of chord inversion symbols. Students should be prepared to complete two inner voices in keyboard style being given a Soprano and Bass line and chord symbol. Students should be familiar with non-chord (non-harmonic) tones such as pedal tones, passing tones, suspensions, neighbor tones, anticipations, escape tones, and appoggiaturas.

What **key** is suggested by the following harmonic progression?

- a) a minor      b) C Major      c) F Major



Identify the **key** by the given **chord** and its **function** label.



- a) F Major      b) c minor      c) B-flat Major

Description of Test Questions  
LEVEL FIVE continued

Keys and Chords continued

Sample Question

Complete the alto and tenor voices in keyboard-style close voicings.

The musical notation shows a 3/2 time signature in E-flat major. The bass line consists of the following notes: E-flat, G, A, B-flat, C, D, E-flat, G, A, B-flat, C, D, E-flat. The alto and tenor lines are to be completed. The chord symbols below the bass line are: I, V, I, IV, I, V, VI, V, I.

[• NOTE: Keyboard-style has upper three voices stemmed together within the range of one octave.]

Terms and Symbols

Refer to the above levels. Students should also have a firm grasp of musical genre such as Gigue, Partita, Allemande, Etude, Prelude, Minuet, Invention, Hymn, Chorale, Sonatina, Sonata, etc.

Analysis

Students will be required to analyze short musical compositions determining key, chord functions, phrases, modulations, and musical era. The example may be homophonic, polyphonic, or a mixture of the two. Students will be asked to recognize when and in which voice the melody appears, whether there is imitation, climactic points, cadences (perfect authentic, imperfect authentic, etc.), modulations, and formal scheme. The analysis of chord functions will include seventh chords and secondary dominants.